

PLANT!T[®] *aeros*

Product Specifications

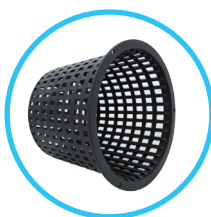
PLANT!T[®] *aeros*[™] AERATED DWC HYDROPONIC SYSTEM

The PLANT!T[®] aeros is an aerated Deep Water Culture hydroponic system - available in 1 plant or 2 plant options and in a 4 plant recirculating option.

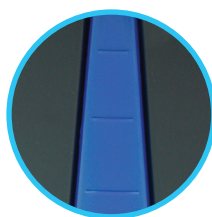
- Recirculating system
- Integral nutrient solution level indicator
- High quality airstone in each tank
- Master tank
- Highly oxygenated root zone
- Stable footprint
- Stylish design
- Inspection port – no need to remove the lid to check pH and EC readings
- Mesh pots
- Pipe and cable management points. All wires and pipes fit neatly, so no blocked pipes or airlines and no tangled wires. All fit correctly, so no problems with light or algae
- High quality air pumps



Mesh pot



Profile level indicator



Inspection port and cover



Pipe management points



PLANT!T[®] aeros

Product Specifications

Product description

The PLANT!T[®] aeros is a Deep Water Culture (DWC) system, also commonly known as a bubbler system. These are very popular hydroponic systems that require very little growing media, but do require a lot of nutrient/water solution.

The plant is supported in a net pot filled with a growing media such as PLANT!T[®] Clay Pebbles and the roots are submerged in a highly oxygenated nutrient/water solution. The PLANT!T[®] aeros I includes a single outlet air pump and a submersible airstone, whilst the PLANT!T[®] aeros II and IV contain one or two twin outlet air pumps depending on the system, and a submersible airstone in each tank. This provides a large amount of oxygen to the roots of the plant, resulting in rapid growth.

The bubbles produced by the airstone keep the nutrient/water solution constantly moving and oxygen-rich, so that the roots stay healthy.

It is important to monitor EC and pH levels closely with this system in order to gain optimum results. This is easy to do by simply removing the inspection port cover and taking a pH/EC reading.

Please note: when using the system, the air pump should be positioned above the water level.

Technical specification

	Max Volume	Working Volume*	Footprints
aeros I	15L	12L	aeros I W 357mm / D 353mm / H 303mm
aeros II	15L per tank	12L per tank	aeros II W 714mm / D 353mm / H 303mm
aeros IV	75L (in total)	60L (in total)	aeros IV W 1000mm / D 1000mm / H 303mm

All figures are approximate *Read specific Pump instructions carefully before use.

